



US Terms

Crochet Along

Stylecraft



Small Corner Square

Ross Blanket - Part 1

Crochet Along*

Welcome to the start of the Ross Blanket Crochet Along designed by Catherine Bligh. Catherine has used Special DK for her blanket. A full list of the shades needed for the CAL is available on our website: <http://www.stylecraft-yarns.co.uk/Crochet.htm>

Over the next couple of months we will be bringing you seven patterns. The dates for your diary are: 18 July, 25 July, 1 August, 8 August, 15 August, and finally 22 August.

We will set out at the beginning of each block which colours and equipment you will need. We will always repeat abbreviations at the beginning of each pattern.

For general hints and tips please see our Crochet Along Introduction pdf which can be found here: <http://www.stylecraft-yarns.co.uk/Crochet.htm>

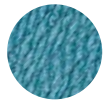
Special DK colours used for Combination A (make 8):



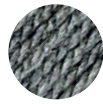
1004
Dark Brown



1005
Cream



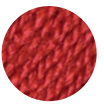
1722
Storm Blue



1099
Grey



Special DK colours used for Combination B (make 8):



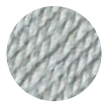
1029
Copper



1001
White



1302
Denim



1203
Silver



EQUIPMENT

4.5mm crochet hook
Tapestry needle
Stitch markers

MEASUREMENT

4in/10cm square

ABBREVIATIONS

sl st	slip stitch	fpdc	front post double crochet
ch	chain	fptc	front post treble crochet
sc	single crochet	fpdc2tog	work front post double crochet decrease across two stitches
hdc	half-double crochet	fpdc2tog	work front post treble crochet decrease across two stitches
dc	double crochet		
tc	treble crochet		
bphdc	back post half-double crochet		
bpdc	back post double crochet		

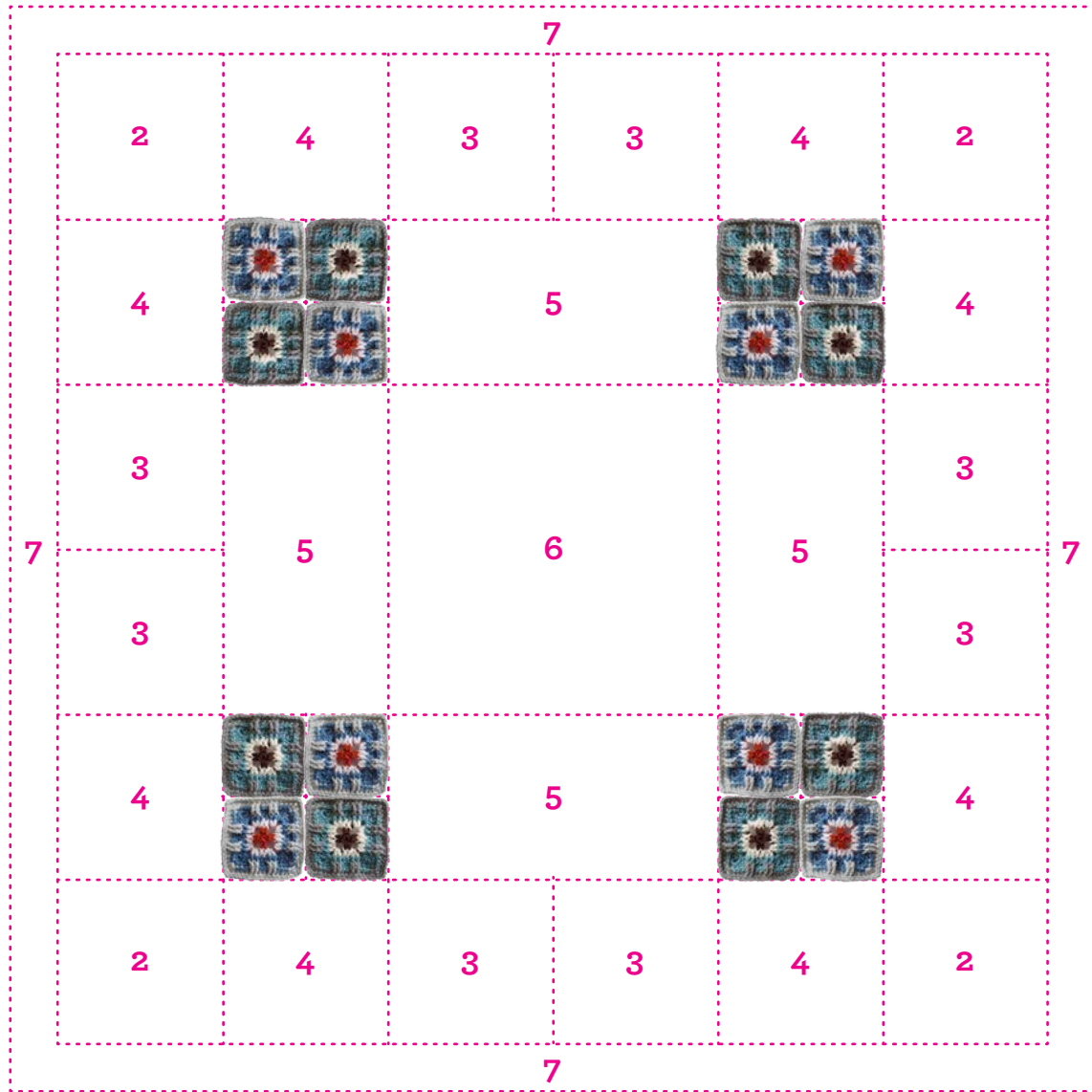
NOTES:

Fastening off and dealing with yarn ends

In terms of fastening off, Catherine always uses the invisible join technique as she explains in her introduction. Catherine then sews the ends with a needle.

Crochet Along*

Part 1 – Small Corner Square (make 16)



Although every effort has been made to ensure that instructions are correct, Stylecraft cannot accept any liabilities. In the unlikely event that there are errors in the patterns we will work as quickly as possible to issue an addenda.

Stylecraft cannot accept responsibility for the result of using any other yarn.

Crochet Along*

You'll be making 16 of these, 8 in colour combination A and 8 in colour combination B. The first colour combination, A, is *italicised*, and the second, B, is in **(bolded brackets)**

Combination A: dark brown, cream, storm blue, grey.
Combination B: copper, white, denim, silver.



METHOD

Round 1: With *dark brown (copper)*, in a magic circle ch1 and 4sc. Join with sl st to beginning sc. Pull the beginning yarn end tight to close the circle. (4sc)

Round 2: Ch3, then dc in same stitch. Ch4, then (2dc in next stitch, ch4) three times. Join with invisible join to 3rd ch of beginning ch3. Break off yarn. (8dc, 4 ch4. 24 stitches in total)

Round 3: With *cream (white)*, begin with standing dc in any ch4 space. (dc, ch2, 2dc) in same space. *fpdc around next two dc, then (2dc, ch2, 2dc) in ch4 space**. Repeat from * to ** three times, omitting final (2dc, ch2, 2dc). Join with invisible join to beginning dc. Break off yarn. (16 dc, 16 fpdc, 4 ch2. 40 stitches in total)



Round 4: With *storm blue (denim)*, begin with standing dc in any ch2 corner space. (dc, ch2, 2dc) in same space. *fpdc around next two stitches, dc in next two stitches, fpdc around next two stitches, and then (2dc, ch2, 2dc) in corner ch2 space**. Repeat from * to ** three times, omitting final (2dc, ch2, 2dc). Join with sl st to beginning dc. (24 dc, 16 fpdc, 4 ch2. 48 stitches in total)



Round 5: Ch1, sc in same stitch and in next stitch. *in ch2 corner space, (sc, ch2, sc), then sc in next 10 stitches**. Repeat from * to ** three times, omitting final two sc. Join with invisible join to beginning sc. Break off yarn. (48 sc, 4 ch2. 56 stitches in total)

Round 6: With *grey (silver)*, begin with standing hdc in any ch2 corner space. 2hdc in same space. *bphdc in next three stitches. fptc around the next two fpdc from round four, and skip next two stitches. bphdc in next two stitches, then fptc around the next two fpdc from round four, and skip next two stitches. Bphdc in next three stitches, then 3hdc in corner ch2 space**. Repeat from * to ** three times, omitting final 3hdc. Join with sl st. (12 hdc, 32 bphdc, 16 fptc. 60 stitches in total)



This is what your fptc should look like.

Round 7: Ch1, sc in same space. *3sc in next stitch, then sc in next 14 stitches**. Repeat from * to ** three times, omitting final sc. Join with invisible join to beginning sc. Break off yarn. (68 sc. 16 stitches per side plus 'corner' stitch)

Sew in all ends.

