



US Terms

Crochet Along

Stylecraft



Under the Sea CAL

Part 1 | Wavy Rectangles

Crochet Along*

Under the Sea CAL by Catherine Bligh

Welcome to the start of the Stylecraft Under the Sea Blanket Crochet Along designed for us by Catherine Bligh. Designed in three colorways, the blanket can be made in Special DK, Bellissima & Bambino DK, or Batik DK.

Over the forthcoming weeks we will be bringing you a new block every fortnight (2 weeks). The dates for your diary are: 5th April, 19th April, 3rd May, 17th May, 31st May, 14th June, 28th June, 12th July and 26th July.

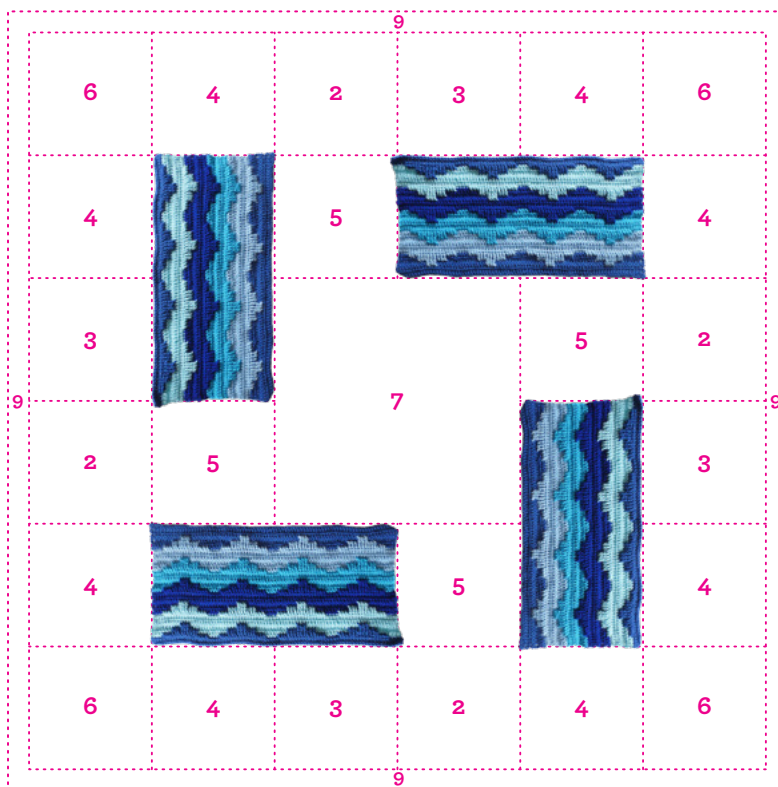
The patterns will focus on one motif every fortnight and you will need to complete an average of 3 motifs per set.

We will set out at the beginning of each motif which colors and equipment you will need. We will always repeat abbreviations at the beginning of each pattern. As there are three Color Recipes, the colors have been labelled A, B, C etc so you can easily identify which color you need for your chosen blanket. The step by step images within the patterns have been shown in the first colorway, using Special DK. The completed motifs in the other two colorways will be shown at the end of each pattern.

For general hints and tips please see the Getting Ready document which can be found here: <https://www.stylecraft-yarns.co.uk/Content/Downloads/UndertheSea-0GettingReadyv5.pdf>

There are 7 different motifs that, when joined together create a 53"/135cm square blanket

The next part will be available 19th April.



- 1 **Wavy Rectangles**
- 2 **Starfish**
- 3 **Sea Pennies**
- 4 **Sea Anemone**
- 5 **Nautilus Shell**
- 6 **Sea Swells**
- 7 **Big Shells**
- 8 **Joining**
- 9 **Border**

Crochet Along*

YARN USAGE – COLORWAY 1 – FATHOMS BELOW

Special DK: 100g – 295m (322yds), 100% Premium Acrylic.



A
Lapis



B
Cloud Blue



C
Turquoise



D
Royal



E
Sherbet

YARN USAGE – COLORWAY 2 – BEAUTIFUL BRINY SEA

Bambino DK: 100g – 268m (293yds), 100% Premium Acrylic.

Bellissima DK: 100g – 268m (293yds), 100% Premium Acrylic.



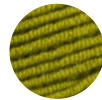
A
All at Sea
(Bambino)



B
Double Denim
(Bellissima)



C
Blue Mist
(Bambino)



D
Sugar Snap
(Bellissima)



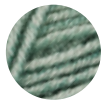
E
Vintage Blue
(Bambino)

YARN USAGE – COLORWAY 3 – THE EDGE OF THE WATER

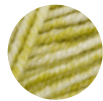
Batik DK: 50g – 138m (151yds), 80% Premium Acrylic, 20% Wool.



A
Storm



B
Sage



C
Pistachio



D
Mint



E
Teal

EQUIPMENT

4.5mm (US 7 / UK 7) crochet hook

(or the size required to give the correct measurements)

Tapestry Needle

Locking Stitch Markers

PATTERN NOTES

Individual round notes will be marked in **bold**. Example:

Note: put st markers in 4th, 13th, 22nd and 31st sts.

Helpful hints (eg, about stitch placements) will be bracketed, italicised, and colored **red**.

Example: Skip first hdc (*the 'hidden' first hdc*)

A ch3 (or ch2) at the beginning of a round always counts as a beginning dc (or beginning hdc), unless otherwise stated.

Where you are not working directly into the round below, the relevant round will be **bolded**.

The numbers in brackets at the end of each round's instructions are the numbers of stitches that should be in that round.

A 'hard' repeat (eg, one side of a square) is started with * and ends with **.

A 'soft' repeat (eg, a repeated pattern within each side of a square) is started with << and ends with >>.

Note: when breaking yarn, remember to leave a long tail to make it easier to sew it in securely at the end.

STITCHES USED

US terminology.

US	
Ch	chain
Sl st	slip stitch
Sc	single crochet
Sc2tog	single crochet 2 sts together
Hdc	half double crochet
Dc	double crochet
Ttc	half treble crochet
Tc	treble crochet
Hdtdc	half double treble crochet
Dtr	double treble crochet
Bpsc	back post single crochet
Bphdc	back post half double crochet
Bpdc	back post double crochet
Fpdc	front post double crochet
Fptc	front post treble crochet
Bptc	back post treble crochet

ABBREVIATIONS

Beg	beginning
Rep	repeat
Rnd	round
RS	Right Side
St(s)	stitch(es)
WS	Wrong Side
Yo	yarn over (yarn round hook)

The color reproduction in this pattern is matched as closely as possible to the yarn but due to photography and printing restrictions some slight variations may occur.

© Catherine Bligh 2021 All rights reserved. This pattern and items created from it are for personal use only. Commercial use of either the patterns or the items made from them is strictly prohibited. Please respect the copyright and do not pass either digitally or otherwise to another person.

Crochet Along*

METHOD (make 4)

You need to make four of these, which should measure 17" x 8.5"/43cm x 21.5cm (if you don't quite achieve the height, but have a little too much width, try giving it a gentle stretch). I strongly advise you to use stitch markers where indicated for at least the first two repetitions of the pattern; after that, you may feel you can manage without. You may find it helpful to put the stitch marker around the post, rather than through the top of the stitch.

Row 1: With color A, work eighty stitches in foundation single crochet. (80 sc)

Row 2: Ch1, turn, then sc in same stitch and in next seventy-nine stitches. (80 sc)

Row 3: Ch1, turn, then sc in same stitch and in next seventy-nine stitches. (80 sc)

Row 4: Turn, ch3 (*counts as dc here and throughout*), then dc in next seventy-nine stitches. (80 dc)

Note: put stitch markers in 12th, 31st, 50th, and 69th stitches.

Row 5: Turn, ch3, then dc in next seventy-nine stitches. (80 dc)

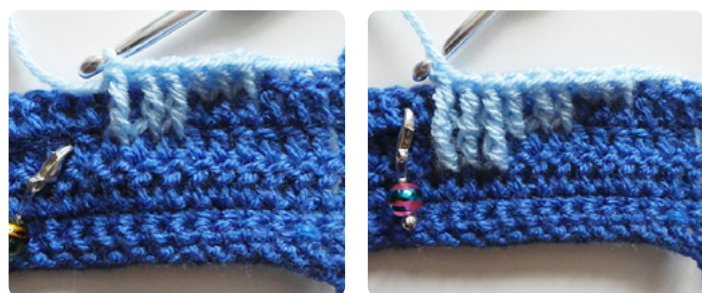
Note: put stitch markers in 9th, 15th, 28th, 34th, 47th, 53rd, 66th, and 72nd stitches.

Row 6: Turn, ch3, then dc in next seventy-nine stitches. Break off yarn. (80 dc) **Note:** put st markers in 6th, 18th, 25th, 37th, 44th, 56th, 63rd, 75th sts.

Row 7: Turn work. With color B, begin with a standing sc in first stitch. Sc in next three stitches.

*Fpdc around next three stitches from row six (skipping the tops of those stitches).

Fptc around next three stitches from row **five** (*i.e. the stitch before the marked stitch, the marked stitch itself, and the stitch after the marked stitch*). Skip next three stitches from row six.



Fpdc around next three stitches from row **four** (*i.e. the stitch before the marked stitch, the marked stitch itself, and the stitch after the marked stitch*). Skip next three stitches from row six.

Fptc around next three stitches from row **five** (*i.e. the stitch before the marked stitch, the marked stitch itself, and the stitch after the marked stitch*). Skip next three stitches from row six.

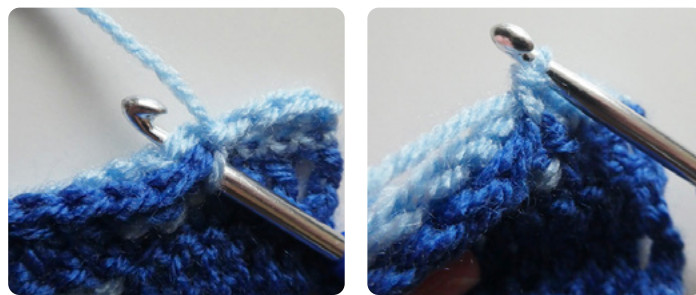
Fpdc around next three stitches from row six (skipping the tops of those stitches).

Sc in next four stitches**.

Repeat from * to ** three times. (20 sc, 24 fptc, 24 fpdc, 12 fpdtr. 80 stitches in total)



Row 8: Ch1, turn, then sc in same stitch and in next three stitches. *Sc in next fifteen stitches of both row six *and* row seven, then sc in next four stitches**. Repeat from * to ** three times. (80 sc)



Row 9: Ch1, turn, then sc in same stitch and in next seventy-nine stitches. (80 sc)

Row 10: Repeat row four (including stitch markers). (80 dc)

Row 11: Repeat row five (including stitch markers). (80 dc)

Row 12: Repeat row six (including stitch markers). Break off yarn. (80 dc)

Row 13: Turn work. With color C, begin with a standing sc in first stitch. Sc in next three stitches.

*Fpdc around next three stitches from row twelve (skipping the tops of those stitches).

Fptc around next three stitches from row **eleven** (*i.e. the stitch before the marked stitch, the marked stitch itself, and the stitch after the marked stitch*). Skip next three stitches from row twelve.

Fpdc around next three stitches from row **ten** (*i.e. the stitch before the marked stitch, the marked stitch itself, and the stitch after the marked stitch*). Skip next three stitches from row twelve.

Fptc around next three stitches from row **eleven** (*i.e. the stitch before the marked stitch, the marked stitch itself, and the stitch after the marked stitch*). Skip next three stitches from row twelve.

Crochet Along*

Fpdc around next three stitches from row twelve (skipping the tops of those stitches).

Sc in next four stitches**.

Repeat from * to ** three times. (20 sc, 24 fptc, 24 fpdc, 12 fpdtr. *80 stitches in total*)

Row 14: Ch1, turn, then sc in same stitch and in next three stitches. *Sc in next fifteen stitches of *both* row thirteen *and* row **twelve**, then sc in next four stitches**. Repeat from * to ** three times. (80 sc)

Row 15: Repeat row nine. (80 sc)

Row 16: Repeat row four (including stitch markers). (80 dc)

Row 17: Repeat row five (including stitch markers). (80 dc)

Row 18: Repeat row six (including stitch markers). Break off yarn. (80 dc)

Row 19: Turn work. With color D, begin with a standing sc in first stitch. Sc in next three stitches.

*Fpdc around next three stitches from row eighteen (skipping the tops of those stitches).

Fptc around next three stitches from row **seventeen** (*i.e. the stitch before the marked stitch, the marked stitch itself, and the stitch after the marked stitch*). Skip next three stitches from row eighteen.

Fpdtr around next three stitches from row **sixteen** (*i.e. the stitch before the marked stitch, the marked stitch itself, and the stitch after the marked stitch*). Skip next three stitches from row eighteen.

Fptc around next three stitches from row **seventeen** (*i.e. the stitch before the marked stitch, the marked stitch itself, and the stitch after the marked stitch*). Skip next three stitches from row eighteen.

Fpdc around next three stitches from row eighteen (skipping the tops of those stitches).

Sc in next four stitches**.

Repeat from * to ** three times. (20 sc, 24 fptc, 24 fpdc, 12 fpdtr. *80 stitches in total*)

Row 20: Ch1, turn, then sc in same stitch and in next three stitches. *Sc in next fifteen stitches of *both* row nineteen *and* row **eighteen**, then sc in next four stitches**. Repeat from * to ** three times. (80 sc)

Row 21: Repeat row nine. (80 sc)

Row 22: Repeat row four (including stitch markers). (80 dc)

Row 23: Repeat row five (including stitch markers). (80 dc)

Row 24: Repeat row six (including stitch markers). Break off yarn. (80 dc)

Row 25: Turn work. With color E, begin with a standing sc in first stitch. Sc in next three stitches.

*Fpdc around next three stitches from row twenty-four (skipping the tops of those stitches).

Fptc around next three stitches from row **twenty-three** (*i.e. the stitch before the marked stitch, the marked stitch itself, and the stitch after the marked stitch*). Skip next three stitches from row twenty-four.

Fpdtr around next three stitches from row **twenty-two** (*i.e. the stitch before the marked stitch, the marked stitch itself, and the stitch after the marked stitch*). Skip next three stitches from row twenty-four.

Fptc around next three stitches from row **twenty-three** (*i.e. the stitch before the marked stitch, the marked stitch itself, and the stitch after the marked stitch*). Skip next three stitches from row twenty-four.

Fpdc around next three stitches from row twenty-four (skipping the tops of those stitches).

Sc in next four stitches**.

Repeat from * to ** three times. (20 sc, 24 fptc, 24 fpdc, 12 fpdtr. *80 stitches in total*)

Row 26: Ch1, turn, then sc in same stitch and in next three stitches. *Sc in next fifteen stitches of *both* row twenty-five *and* row **twenty-four**, then sc in next four stitches**. Repeat from * to ** three times. (80 sc)

Row 27: Repeat row nine. (80 sc)

Row 28: Repeat row four (including stitch markers). (80 dc)

Row 29: Repeat row five (including stitch markers). (80 dc)

Row 30: Repeat row six (including stitch markers). Break off yarn. (80 dc)

Row 31: Turn work. With color A, begin with a standing sc in first stitch. Sc in next three stitches.

*Fpdc around next three stitches from row thirty (skipping the tops of those stitches).

Fptc around next three stitches from row **twenty-nine** (*i.e. the stitch before the marked stitch, the marked stitch itself, and the stitch after the marked stitch*). Skip next three stitches from row thirty.

Crochet Along*

Fpdtr around next three stitches from row **twenty-eight** (*i.e. the stitch before the marked stitch, the marked stitch itself, and the stitch after the marked stitch*). Skip next three stitches from row thirty.

Fptc around next three stitches from row **twenty-nine** (*i.e. the stitch before the marked stitch, the marked stitch itself, and the stitch after the marked stitch*). Skip next three stitches from row thirty.

Fpdc around next three stitches from row thirty (skipping the tops of those stitches).

Sc in next four stitches**.

Repeat from * to ** three times. (20 sc, 24 fptc, 24 fpdc, 12 fpdtr. 80 stitches in total)

Row 32: Ch1, turn, then sc in same stitch and in next three stitches. *Sc in next fifteen stitches of *both* row thirtyone *and* row **thirty**, then sc in next four stitches**. Repeat from * to ** three times. (80 sc)

Row 33: Repeat row nine. (80 sc)

Row 34: Repeat row nine. Break off yarn. (80 sc)

Sew in all ends.

Completed block in Colorway 1



Completed block in Colorway 2



Completed block in Colorway 3

