

Head over Heels

Festive Cardigans

41-51cm
16-20in
birth - 2yrs

4
designs



Festive Cardigans in Head Over Heels Festive

MEASUREMENTS

| Age | | 0-6 months | 6-12 months | 1-2 years |
|---------------------------|----|------------|-------------|-----------|
| To Fit Chest | cm | 41 | 46 | 51 |
| | in | 16 | 18 | 20 |
| Actual Measurement | cm | 46 | 52 | 60 |
| | in | 18 | 20½ | 23¾ |
| Full Length | cm | 21 | 25 | 33 |
| | in | 8¼ | 9¾ | 13 |
| Sleeve Length | cm | 15 | 17 | 20 |
| | in | 6 | 6½ | 8 |

YOU WILL NEED

Little Elf Cardigan

| | | | | |
|-------------------------|------------|-----|-----|-----|
| Head Over Heels Festive | MC Rudolph | 40g | 54g | 68g |
| 100g balls | CC Cupid | 30g | 39g | 48g |

Shooting Star Cardigan

| | | | | |
|-------------------------|------------|-----|-----|-----|
| Head Over Heels Festive | MC Comet | 65g | 79g | 93g |
| 100g balls | CC Rudolph | 5g | 14g | 23g |

Candy Cane Cardigan

| | | | | |
|-------------------------|------------|-----|-----|-----|
| Head Over Heels Festive | MC Vixen | 55g | 69g | 83g |
| 100g balls | CC Rudolph | 15g | 24g | 33g |

Snowflake Cardigan

| | | | | |
|-------------------------|------------|-----|-----|-----|
| Head Over Heels Festive | MC Rudolph | 60g | 74g | 88g |
| 100g balls | CC Cupid | 10g | 19g | 28g |

1 pair 3.25 mm (UK10 – USA3) needles. 3 buttons.

ABBREVIATIONS

| | | | |
|---------------------------|--------------------------|--------------------------|----------------------------|
| alt alternate | g grammes | psso pass slipped | st(s) stitch(es) |
| beg beginning | in inch(es) | stitch over | tbl through back of |
| cc contrast colour | inc increase(ing) | rem remain(ing) | loop |
| cm centimetre(s) | k knit | rep repeat | tog together |
| cont continue | mc main colour | rs right side | ws wrong side |
| dec decrease(ing) | mm millimetre(s) | s1 slip 1 stitch | yfwd yarn forward |
| fol following | p purl | | |

The yarn amounts stated are based on average requirements and are therefore approximate.

TENSION 28 sts and 36 rows to 10 cm, 4 in, over stocking stitch on 3.25 mm needles or the size required to give the correct tension.

It is essential to work to the stated tension to ensure the correct size of garment and you should always knit a tension square.

If there are less sts and rows to 10cm, 4in, change to finer needles if there are more sts and rows to 10cm, 4in, change to larger needles.

Instructions are given for the first, smallest size. Larger sizes are given in square brackets. Where only one figure is given, this applies to all sizes. Where the figure 0 appears, no stitches, times, or rows are worked for this size.

After casting off, one stitch will remain on the right hand needle which is not included in the instructions that follow.

Although every effort has been made to ensure that instructions are correct, Stylecraft cannot accept any liabilities.

Stylecraft cannot accept responsibility for the result of using any other yarn.

Circle the size you wish to make

Little Elf Cardigan

BACK

Using 3.25mm needles and MC cast on 65[75:85] sts.

1st row (rs). K1, * p1, k1, rep from * to end.

2nd row. P1, * k1, p1, rep from * to end.

These 2 rows are called **1x1 rib**.** Work 10 rows more in rib dec 1 st at end of last row. 64[74:84] sts. ***

1st row. Knit.

2nd row. Purl.

These 2 rows are called **st-st** (stocking stitch). ****

Cont in st-st until back measures 11[14:20]cm, 4¼ [5½:8]in, ending with a ws row.

Shape Raglan Armholes

Change to CC and cast off 4 sts at beg of next 2 rows. 56[66:76] sts.

Next row. K3, s1, k1, psso, knit to last 5 sts, k2tog, k3. 54[64:74] sts.

Next row. P3, p2tog, purl to last 5 sts, p2tog tbl, p3. 52[62:72] sts.

For 2nd and 3rd sizes only

Work 4 rows dec 1 st at each end as set in every row. [54:64] sts.

For all sizes

Next row. K3, s1, k1, psso, knit to last 5 sts, k2tog, k3. 50[52:62] sts.

Next row. Purl.

Work 22[20:26] rows dec 1 st at each end as set in next and every foll alt row. 28[32:36] sts. Cast off rem sts.

LEFT FRONT

Using 3.25mm needles and MC cast on 32[38:42] sts.

1st row (rs). * K1, p1, rep from * to end.

2nd row. As 1st row.

These 2 rows form rib. **

Work 10 rows more in rib dec 0[1:0] st at end of last row. 32[37:42] sts. ***

Work in st-st until left front measures 11[14:20]cm, 4¼ [5½:8]in, ending with a ws row.

Shape Raglan Armhole

Change to CC

Next row. Cast off 4 sts, knit to end. 28[33:38] sts.

Next row. Purl.

Work 2[6:6] rows dec 1 st at

armhole edge as set on back in every row. 26[27:32] sts.
Work 15[13:19] rows dec 1 st at raglan edge as set in next and every foll alt row. 18[20:22] sts.

Shape Neck

Next row (ws). Cast off 8[10:12] sts, purl to end. 10 sts.

Next row. K3, s1, k1, pssso, k3, k2tog. 8 sts.

Next row. P2tog, purl to end. 7 sts.

Next row. K3, s1, k1, pssso, k2tog. 5 sts.

Next row. Purl.

Next row. K2, s1, k2tog, pssso. 3 sts.

Next row. Purl.

Next row. K1, s1, k1, pssso. 2 sts.

Next row. P2tog and fasten off.

RIGHT FRONT

Using 3.25mm needles and MC cast on 32[38:42] sts.

1st row (rs). * P1, k1, rep from * to end.

2nd row. As 1st row.

These 2 rows form rib. **

Work 10 rows more in rib dec 0[1:0] st at end of last row. 32[37:42] sts.

Work in st-st until right front measures 11[14:20]cm, 4¼ [5½:8]in, ending with a rs row.

Shape Raglan Armhole

Change to CC

Next row. Cast off 4 sts, purl to end. 28[33:38] sts.

Work 2[6:6] rows dec 1 st at armhole edge as set on back in every row. 26[27:32] sts.

Work 14[12:18] rows dec 1 st at raglan edge as set in next and every foll alt row. 19[21:23] sts.

Shape Neck

Next row. Cast off 8[10:12] sts, knit to last 5 sts, k2tog, k3. 10 sts.

Next row. Purl.

Next row. S1, k1, pssso, k3, k2tog, k3. 8 sts.

Next row. Purl to last 2 sts, p2tog. 7 sts.

Next row. S1, k1, pssso, k2tog, k3. 5 sts.

Next row. Purl.

Next row. K3tog, k2. 3 sts.

Next row. Purl.

Next row. S1, k1, pssso, k1. 2 sts.

Next row. P2tog and fasten off.

SLEEVES (Both alike)

Using 3.25mm needles and MC cast on 37[41:45] sts.

Work 12 rows in 1x1 rib, dec 1 st at end of last row. 36[40:44] sts.

Work in st-st (throughout) inc 1 st at each end of 3rd[3rd:5th] and every foll 2nd[2nd:4th] row to 42[44:70] sts.

For 1st and 2nd sizes only

Inc 1 st at each end of every foll 4th row to 56[62] sts.

For all sizes

Cont without shaping until sleeve measures 15[17:20]cm, 6[6½:8]in, ending with a ws row.

Shape Raglan

Change to CC

Cast off 4 sts at beg of next 2 rows. 48[54:62] sts.

Work 8[12:12] rows dec 1 st at each end as set by back in every row. 32[30:38] sts.

Work 18[16:22] rows dec 1 st at each end of next and every foll alt row. 14[14:16] sts.

Cast off rem sts.

BUTTONHOLE BAND

Girl

With rs facing, using 3.25mm needles and MC, beg at cast on edge, pick up and knit 32[40:58] sts evenly along right front edge to beg of armhole shaping and 14[16:20] sts to beg of neck shaping. 46[56:78] sts.

Work in rib as given for Left Front as folls:

Work 2 rows.

3rd row. Rib 2, rib2tog, yfwd, (rib3[4:6], rib2tog, yfwd) twice, rib to end.

Work 3 rows more in rib.

Cast off in rib.

Boy

With rs facing, using 3.25mm needles and MC, beg at cast off edge of neck, pick up and knit 14[16:20] sts evenly along left front edge to beg of armhole shaping and 32[40:58] to cast on edge. 46[56:78] sts.

Work in rib as given for Right Front as folls:

Work 2 rows.

3rd row. Rib 32[40:58], yfwd,

rib2tog, (rib3[4:6], yfwd, rib2tog) twice, rib 2.

Work 3 rows more in rib.

Cast off in rib.

BUTTON BAND

Girl

Using MC, with rs facing, beg at cast off edge of neck, using 3.25mm needles, pick up and knit 14[16:20] sts evenly along left front edge to beg of armhole shaping and 32[40:58] to cast on edge. 46[56:78] sts.

Work 6 rows in rib as given for Right Front.

Cast off in rib.

Boy

With rs facing, using 3.25mm needles and MC, beg at cast on edge, pick up and knit 32[40:58] sts evenly along right front edge to beg of armhole shaping and 14[16:20] sts to beg of neck shaping. 46[56:78] sts.

Work 6 rows in rib as given for Right Front.

Cast off in rib.

NECKBAND

Join raglan seams. With rs facing, using 3.25 mm needles, beg at cast off edge of front band, pick up and knit 19[21:23] sts evenly along right side of neck, 14[14:16]sts from top of right sleeve, 27[31:35] sts from 28[32:36] cast off sts at back of neck, 14[14:16] sts from top of left sleeve and 19[21:23] sts evenly along left side of neck ending at cast off edge of front band. 93[101:113] sts.

Beg with 2nd row of 1x1 rib, work 4 rows.

Cast off in rib.

TO MAKE UP

Join side and sleeve seams. Sew on buttons. Pin out cardigan to the measurements given. Cover with clean, damp tea towels and leave to dry. See ball band for washing and further care instructions.

Shooting Star Cardigan

BACK

Using 3.25mm needles and CC cast on 65[75:85] sts.

1st row (rs). K1, * p1, k1, rep from * to end.

2nd row. P1, * k1, p1, rep from * to end.

These 2 rows are called **1x1 rib**. Change to MC. Work as given for back of Little Elf Cardigan from ** omitting colour changes.

LEFT FRONT

Using 3.25mm needles and CC, cast on 32[38:42] sts.

1st row (rs). * K1, p1, rep from * to end.

2nd row. As 1st row.

These 2 rows form rib.

Change to MC. Work as given for Left Front Little Elf Cardigan from ** omitting stated colour changes.

RIGHT FRONT

Using 3.25mm needles and CC, cast on 32[38:42] sts.

1st row (rs). * P1, k1, rep from * to end.

2nd row. As 1st row.

These 2 rows form rib.

Change to MC. Work as given for Right Front Little Elf Cardigan from ** omitting stated colour changes.

SLEEVES (Both alike)

Using 3.25mm needles and CC cast on 37[41:45] sts.

Work as given for sleeves for Little Elf Cardigan working 2 rows in CC, then change and cont in MC, omitting colour changes stated for Little Elf Cardigan.

BUTTONHOLE BAND

Girl

With rs facing, using 3.25mm and MC work as given for Girl Buttonhole Band for Little Elf Cardigan, working last row and cast off in CC.

Boy

With rs facing, using 3.25mm and MC work as given for Boy Buttonhole Band for Little Elf Cardigan, working last row and cast off in CC.

BUTTON BAND

Girl

With rs facing, using 3.25mm and MC work as given for Girl Button Band for Little Elf Cardigan, working last row and cast off in CC.

Boy

With rs facing, using 3.25mm and

MC work as given for Boy Button Band for Little Elf Cardigan, working last row and cast off in CC.

NECKBAND

With rs facing, using 3.25mm and MC work as given for Neckband for Little Elf Cardigan, working last row and cast off in CC.

TO MAKE UP

Work as given for Little Elf Cardigan.

Candy Cane Cardigan

BACK

Using 3.25mm needles and CC cast on 65[75:85] sts.

1st row (rs). K1, * p1, k1, rep from * to end.

2nd row. P1, * k1, p1, rep from * to end.

These 2 rows are called **1x1 rib**.

Change to MC. Work as given for back of Little Elf Cardigan from *** omitting colour changes.

LEFT FRONT

Using 3.25mm needles and CC, cast on 32[38:42] sts.

1st row (rs). * K1, p1, rep from * to end.

2nd row. As 1st row.

These 2 rows form rib.

Change to MC. Work as given for Left Front Little Elf Cardigan from *** omitting stated colour changes.

RIGHT FRONT

Using 3.25mm needles and CC, cast on 32[38:42] sts.

1st row (rs). * P1, k1, rep from * to end.

2nd row. As 1st row.

These 2 rows form rib.

Change to MC. Work as given for Right Front Little Elf Cardigan from *** omitting stated colour changes.

SLEEVES (Both alike)

Using 3.25mm needles and CC cast on 37[41:45] sts.

Work as given for sleeves for Little Elf Cardigan to *** changing to MC, omitting colour changes stated for Little Elf Cardigan.

BUTTONHOLE BAND

Girl

With rs facing, using 3.25mm and CC work as given for Girl

Buttonhole Band for Little Elf Cardigan, omitting colour changes for Little Elf Cardigan

Boy

With rs facing, using 3.25mm and CC work as given for Boy Buttonhole Band for Little Elf Cardigan, omitting colour changes for Little Elf Cardigan.

BUTTON BAND

Girl

With rs facing, using 3.25mm and CC work as given for Girl Button Band for Little Elf Cardigan, omitting colour changes for Little Elf Cardigan

Boy

With rs facing, using 3.25mm and CC work as given for Boy Button Band for Little Elf Cardigan, omitting colour changes for Little Elf Cardigan

NECKBAND

With rs facing, using 3.25mm and CC work as given for Neckband for Little Elf Cardigan, omitting colour changes for Little Elf Cardigan.

TO MAKE UP

Work as given for Little Elf Cardigan.

Snowflake Cardigan

BACK

Using 3.25mm needles and MC cast on 65[75:85] sts.

Work as given for back of Little Elf Cardigan to *** omitting colour changes.

Next row (rs): K2[7:5], work row 1 of chart repeating chart 4[4:5] times in total to last, 2[7:4]sts, k2[7:4].

Cont to work from chart until all rows are completed.

Using MC cont in st-st until back measures 11[14:20]cm, 4¼ [5½:8]in, ending with a ws row.

Shape Raglan Armholes

Work as given for back for Little Elf Cardigan

LEFT FRONT

Using 3.25mm needles and MC, cast on 32[38:42] sts.

11

1

2

3

4

5

6

7

8

9

10

11

Work as given for Left Front of Little Elf Cardigan to *** omitting colour changes.

Work 2 rows in **st-st**.

Next row (rs): K1[4:6], work row 1 of chart repeating chart twice in total to last, 1[3:6]sts, k1[3:6].

Cont to work from chart until all rows are completed.

Cont in MC work in st-st until left front measures 11[14:20]cm, 4¼ [5½:8]in, ending with a ws row.

Shape Raglan Armholes

Work as given for Left Front for Little Elf Cardigan

RIGHT FRONT

Using 3.25mm needles and MC, cast on 32[38:42] sts.

Work as given for Right Front of Little Elf Cardigan to *** omitting colour changes.

Work 2 rows in **st-st**.

Next row (rs): K1[3:6], work row 1 of chart repeating chart twice in total to last, 1[4:6]sts, k1[4:0].

Cont to work from chart until all rows are completed.

Cont in MC work in st-st until left front measures 11[14:20]cm, 4¼ [5½:8]in, ending with a ws row.

Shape Raglan Armholes

Work as given for Right Front for Little Elf Cardigan

SLEEVES (Both alike)

Using 3.25mm needles and MC cast on 37[41:45] sts.

Work as given for sleeves for Little Elf Cardigan, omitting colour changes stated for Little Elf Cardigan.

BUTTONHOLE BAND

Girl

With rs facing, using 3.25mm and MC work as given for Girl Buttonhole Band for Little Elf Cardigan, omitting colour changes for Little Elf Cardigan

Boy

With rs facing, using 3.25mm and MC work as given for Boy Buttonhole Band for Little Elf Cardigan, omitting colour changes for Little Elf Cardigan.

BUTTON BAND

Girl

With rs facing, using 3.25mm and MC work as given for Girl Button Band for Little Elf Cardigan, omitting colour changes for Little Elf Cardigan

Boy

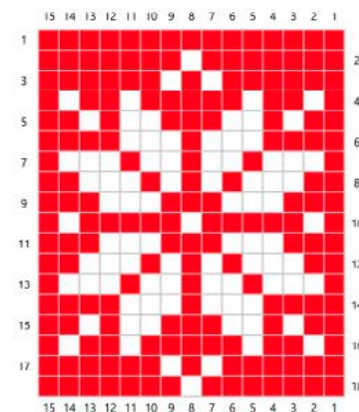
With rs facing, using 3.25mm and MC work as given for Boy Button Band for Little Elf Cardigan, omitting colour changes for Little Elf Cardigan

NECKBAND

With rs facing, using 3.25mm and MC work as given for Neckband for Little Elf Cardigan, omitting colour changes for Little Elf Cardigan.

TO MAKE UP

Work as given for Little Elf Cardigan.



Stylecraft

Spectrum Yarns, Spa Mill, New Street, Slaithwaite, HD7 5BB

www.stylecraft-yarns.co.uk



facebook.com/stylecraftyarn



twitter.com/stylecraftyarn

The colour reproduction in this pattern is matched as closely as possible to the yarn but due to photography and printing restrictions some slight variations may occur.

WARNING – COPYRIGHT: This publication is protected by the law of copyright and may not be reproduced or copied either by photocopying or in any other way. It is sold on the condition that it is only used for non-commercial purposes. All other rights are expressly reserved by Stylecraft.