



UK Terms

# Crochet Along

Stylecraft



## Sunstar Blanket

Part 7

# Crochet Along\*

## My Sun & Stars – Design & colourway by Jo Smith:

1 x 50g ball in each of the following yarns and shades:



1904  
A Batik DK  
Cherry



1903  
E Batik DK  
Coral

2 x 50g ball in each of the following yarns and shades:



1909  
K Batik DK  
Teal

1 x 100g ball in each of the following yarns and shades:



2417  
B Life DK  
Lily



2394  
C Life DK  
Dafodil



2359  
D Life DK  
Melon



2357  
F Life DK  
Aqua



2323  
I Life DK  
Charcoal



2305  
J Life DK  
Cream



2416  
L Life DK  
Teal

2 x 100g ball in each of the following yarns and shades:



2447  
G Life DK  
French Blue



2495  
H Life DK  
Deep Purple

## My Vintage – Design & colourway by Jo Smith:

1 x 50g ball in each of the following yarns and shades:

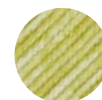


1905  
A Batik DK  
Raspberry

2 x 50g ball in each of the following yarns and shades:

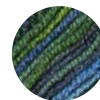


1907  
B Batik DK  
Plum



1910  
K Batik DK  
Pistachio

3 x 50g ball in each of the following yarns and shades:



1933  
G Batik Elements DK  
Krypton

1 x 100g ball in each of the following yarns and shades:



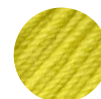
2319  
C Life DK  
Cranberry



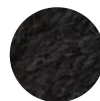
2306  
D Life DK  
Cardinal



2344  
E Life DK  
Fuchsia



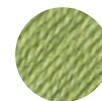
2356  
F Life DK  
Zing



2323  
I Life DK  
Charcoal

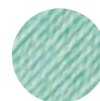


2305  
J Life DK  
Cream



2311  
L Life DK  
Fern

2 x 100g ball in each of the following yarns and shades:



2342  
H Life DK  
Mint

# Crochet Along\*

## My Country Garden – alternative edging & colourway by Heather Leal

1 x 100g ball in each of the following yarns and shades:



1067

**A** Special DK  
Grape



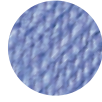
1277

**B** Special DK  
Violet



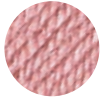
1023

**C** Special DK  
Raspberry



1188

**D** Special DK  
Lavender



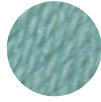
1080

**E** Special DK  
Pale Rose



1834

**F** Special DK  
Lincoln



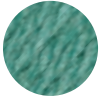
1820

**H** Special DK  
Duck Egg



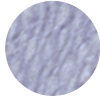
1843

**I** Special DK  
Powder Pink



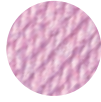
1725

**J** Special DK  
Sage



1724

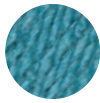
**K** Special DK  
Parma Violet



1390

**L** Special DK  
Clematis

2 x 100g ball in each of the following yarns and shades:



1722

**G** Special DK  
Storm Blue

### EQUIPMENT

4mm (UK 8, US G/6) crochet hook

Tapestry needle

Scissors

Tape measure

### MEASUREMENT

4in/10cm square

### ABBREVIATIONS

<b>beg</b>	beginning	<b>mm</b>	millimeter(s)
<b>ch</b>	chain	<b>rem</b>	remain(ing)
<b>cm</b>	centimetre(s)	<b>rep</b>	repeat
<b>cont</b>	continue	<b>RS</b>	right side
<b>dc</b>	double crochet	<b>sl st</b>	slip stitch
<b>dtr</b>	double treble	<b>sp(s)</b>	space(s)
<b>g</b>	grammes	<b>st(s)</b>	stitch(es)
<b>htr</b>	half treble	<b>tr</b>	treble
<b>in</b>	inches	<b>WS</b>	wrong side

### NOTES:

The yarn amounts stated are based on average requirements and are therefore approximate.

The step by step photos in this pattern show the My Country Garden colourway. To work your chosen colour way just follow the letters indicated in your colour recipe.



# Crochet Along\*

## Part 7





# Crochet Along\*

## PART 7

To finish your blanket we will join your motifs made in part 6 and then continue to work in the round for your edging.

### Joining your motifs together to make a frame

Using G, join the motifs together by working 1dc in each of the 15sts, work through 1 st on one motif & through 1 st on your second motif on reverse of work at the same time. Use the layout image to help you to create a frame which you will later join to the main blanket.

To begin to layout your motifs, place your corner motifs first and then your centre of each row motif (these will be in the same colour-way). This will help you to correctly place the rest of your motifs.



Joining your motifs



Layout image showing one corner of "frame", all 4 corners are the same.

### Joining to your main piece

**Round 1:** Using G & working along the inside of your frame, re-join yarn with RS facing to any ch-sp corner of one of your four corner motifs. \*\* 2dc in same 2ch sp corner, miss join between corner motif & next motif, \* 1dc in 2ch sp of next motif, 1dc in each of next 15tr, 1dc in next 2ch sp, 1dc in join between motifs, rep from \* 5 times more, 1dc in 2ch sp of next motif, 1dc in each of next 15tr, 1dc in 2ch sp, miss join, rep from \*\* to end of round, sl st to first dc. 508sts (127sts per side).



Joining Round 1

**Round 2:** Cont in G & working on WS of piece, dc together your set aside main piece & your frame by working 1dc in each st (not including 2 ch sp at your four corners) & work through 1 st on your main piece and 1 st on your frame on reverse of work at the same time. 508 sts



Joining Round 2

### Edging

Continue in the round to the outside edge of your blanket.

**Round 1:** Using G & with RS facing, rejoin yarn in any corner space & now working along the outside of your frame, work \* (2dc, 2ch, 2dc) in each corner, 1dc in each of the next 15sts per motif, 1dc in each 2ch sp per motif & 1dc in each join between motifs to end of side, rep from \* sl st to top of first dc, fasten off. 652 sts not including 2ch sp corners (163sts per side).

### For 'My Sun & Stars' and 'My Vintage' only

**Round 2:** Using L rejoin to any corner ch sp, work 3ch (counts as 1tr), (1dc, 1tr, 2ch, 2tr) in same corner ch sp, \* 1tr in each dc to end of side, (2tr, 2ch, 2tr) in next corner ch sp, repeat from \* to end of round, ending sl st to top of 3ch, fasten off. 668 sts not including 2ch sp at corners (167sts per side)

**Round 3:** Using K rejoin to any corner ch sp, work (3ch, 1tr, 2ch, 2tr) in same corner ch sp, \* 1tr in each of next 83tr, 2tr in next tr, 1tr in each of next 83tr, (2tr, 2ch, 2tr) in next corner ch sp, repeat to end of round, ending sl st to top of 3ch, fasten off. 688 sts not including 2ch sp at corners (172sts per side)

**Round 4:** (In this rnd you will be encasing your strand of yarn in the colour not being worked as in your previous colour work in parts 1, 2 and 5)

Using I with RS facing, rejoin to any corner ch sp, work (3ch, 1tr, 2ch, 2tr) in same corner ch sp, change to J work 1tr in each of next 4tr, \* change to I work 1tr in each of next 4tr, change to J work 1tr in each of next 4tr, repeat from \* to end of side, change to I work (2tr, 2ch, 2tr) in next corner 2 ch sp, change to J work 1tr in next 4tr \*\*, rep from \* to \*\* to end of round, ending sl st to top of 3ch, fasten off. 704 sts not including 2ch sp at corners (176sts per side)

**Round 5:** Using I, rejoin to any corner 2ch sp, work (2dc, 2ch, 2dc) in each corner, 1dc in each tr, rep from \* to end, ending sl st to first dc. 720 sts not including 2ch sp at corners (180sts per side)

If you have chosen to make 'My Sun & Stars' and 'My Vintage', fasten off.

# Crochet Along\*

## For 'My Country Garden' only

**Round 2:** Using F rejoin to any corner ch sp, work 3ch (counts as 1tr), (1dc, 1tr, 2ch, 2tr) in same corner ch sp, \* miss 1dc, 1tr in each dc to last dc before end of side, miss 1dc, (2tr, 2ch, 2tr) in next corner ch sp, repeat from \* to end of round, ending sl st to top of 3ch, fasten off. 660 sts not including 2ch sp at corners (165sts per side)

**Round 3:** Using K rejoin to any corner ch sp, work (3ch, 1tr, 2ch, 2tr) in same corner ch sp, \* miss 1tr, 1tr in each tr to last tr before end of side, miss 1tr, (2tr, 2ch, 2tr) in next corner ch sp, repeat from \* to end of round, ending sl st to top of 3ch, fasten off. 668 sts not including 2ch sp at corners (167sts per side)

**Round 4:** Using K rejoin to any corner ch sp, work (3ch, 1tr, 2ch, 2tr) in same corner ch sp, \* 1tr in each of next 83tr, 2tr in next tr, 1tr in each of next 83tr, (2tr, 2ch, 2tr) in next corner ch sp, repeat to end of round, ending sl st to top of 3ch, fasten off. 688 sts not including 2ch sp at corners (172sts per side)

**Round 5:** (In this rnd you will be encasing your strand of yarn in the colour not being worked as in your previous colour work in parts 1, 2 and 5)

Using I with RS facing, rejoin to any corner ch sp, work (3ch, 1tr, 2ch, 2tr) in same corner ch sp, change to J work 1tr in each of next 4tr, \* change to I work 1tr in each of next 4tr, change to J work 1tr in each of next 4tr, repeat from \* to end of side, change to I work (2tr, 2ch, 2tr) in next corner 2 ch sp, change to J work 1tr in next 4tr \*\*, rep from \* to \*\* to end of round, ending sl st to top of 3ch, fasten off. 704 sts not including 2ch sp at corners (176sts per side)

**Round 6:** Using A, rejoin to any corner 2ch sp, work (2dc, 2ch, 2dc) in each corner, 1dc in each tr, rep from \* to end, ending sl st to first dc. 720 sts not including 2ch sp at corners (180sts per side)

## For 'My Country Garden' continue.



Rounds 1 to 6

## The Patchwork Heart – 'My Country garden' with shaped edging only

**Round 7:** Using A with RS facing, rejoin to any corner 2ch sp, (3ch, 4tr, 2ch, 5tr) in same corner ch sp, miss 2dc, 1dc in next dc, \* miss 2dc, 5tr in next dc, miss 2 dc, 1dc in next dc, rep from \* to last 2dc of side, miss 2dc, (5tr, 2ch, 5tr) in next corner

ch sp, rep from \*\* to end of round, ending sl st in top of first 3ch. Fasten off. 740sts not including 2ch sp corners. (185 sts per side)



Rounds 1 to 7

## Finishing

Sew in all remaining ends. Pin out blanket to approximately 122cm (48in) x 122cm (48in).

Cover with a clean, damp tea towel and leave to dry.

See ball band for washing and further care instructions.

