



US Terms

Crochet Along

Stylecraft



Central Square

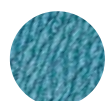
Ross Blanket - Part 6

Crochet Along*

Part 6 – Central Square (make 1)



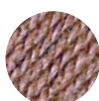
Special DK colours used:



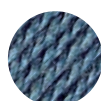
1722
Storm Blue



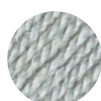
1001
White



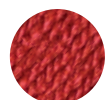
1064
Mocha



1302
Denim



1203
Silver



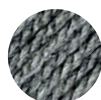
1029
Copper



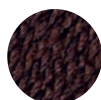
1005
Cream



1002
Black



1099
Grey



1004
Dark Brown

ABBREVIATIONS

sl st slip stitch

ch chain

sc single crochet

hdc half-double crochet

dc double crochet

tc treble crochet

bphdc back post half-double
crochet

bpdc back post double
crochet

fpdc front post double
crochet

fptc front post treble
crochet

fpdc2tog work front post
double crochet
decrease across
two stitches

fptc2tog work front post
treble crochet
decrease across
two stitches

EQUIPMENT

4.5mm crochet hook
Tapestry needle
Stitch markers

MEASUREMENT

41cm x 41cm/16in x 16in

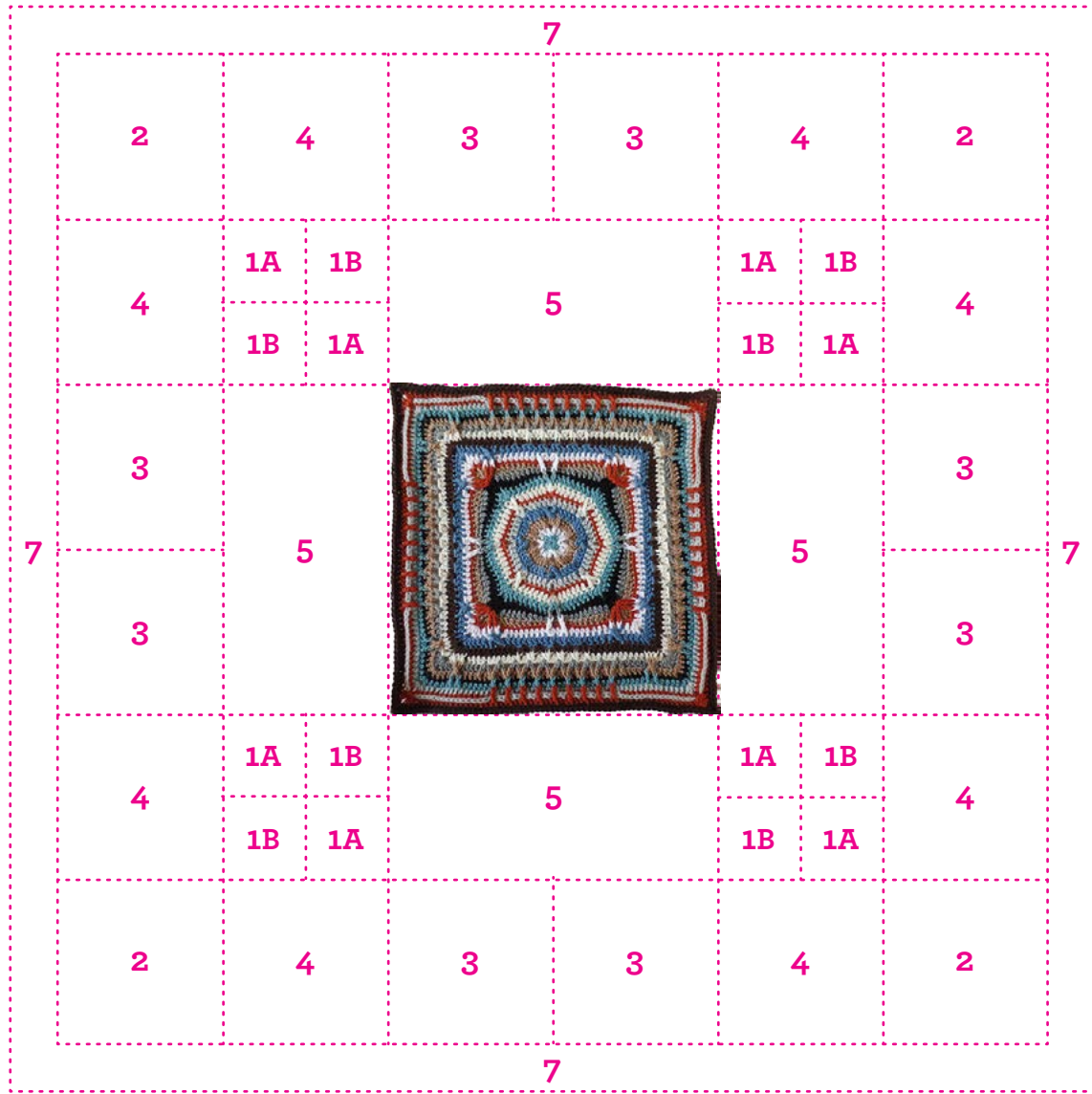
NOTES:

Fastening off and dealing with yarn ends

In terms of fastening off, Catherine always uses the invisible join technique as she explains in her introduction. Catherine then sews the ends with a needle.

Crochet Along*

Part 6 – Central Square (make 1)



Although every effort has been made to ensure that instructions are correct, Stylecraft cannot accept any liabilities. In the unlikely event that there are errors in the patterns we will work as quickly as possible to issue an addenda.

Stylecraft cannot accept responsibility for the result of using any other yarn.

Crochet Along*

METHOD

Round 1: With storm blue, in a magic circle ch3 (counts as one dc), then 11dc. Join with invisible join to beginning ch3. Break off yarn. Pull the beginning yarn end tight to close the circle. (12 dc)

Round 2: With white, begin with standing dc in any stitch. *(fpdc, ch2, fpdc) around next stitch, then dc in next two stitches**. Repeat from * to ** three times, omitting final dc. Join with invisible join to beginning dc. Break off yarn. (8 fpdc, 8 dc, 4 ch2. 24 stitches in total)



Round 3: With mocha, begin with standing dc in any ch2 space. (dc, ch2, 2dc) in same space. *fpdc around fpdc from round two, then 2dc in each of the next two stitches. fpdc around fpdc from round two, then (2dc, ch2, 2dc) in ch2 space**. Repeat from * to ** three times, omitting final (2dc, ch2, 2dc). Join with invisible join to beginning dc. Break off yarn. (32 dc, 8 fpdc, 4 ch2. 48 stitches in total)



This is what your square should look like.

Round 4: With denim, begin with standing dc in any fifth stitch before ch2 corner. Dc in next three stitches. * fptc around the 1st dc after ch2 space from round three, Working behind fptc just made, skip dc, then 3sc in ch2 space. Fptc around the last dc before ch2 space from round three, and skip next dc. Dc in next four stitches, ch1, then dc in next four stitches**. Repeat from * to ** three times, omitting final four dc. Join with invisible join to beginning dc. Break off yarn. (32 dc, 12 sc, 8 fptc, 4 ch1. 56 stitches in total)



Make sure you begin in the right place.



This is what your 'crossed' fptc stitches should look like.

Round 5: With silver, begin with standing dc in any ch1 space. (ch2, dc) in same space. *Skip next stitch, then dc in next four stitches. Skip next stitch, then (dc, ch2, dc) in next stitch. Skip next stitch, dc in next four stitches, skip next stitch, then (dc, ch2, dc) in ch1 space**. Repeat from * to ** three times, omitting final (dc, ch2, dc). Join with invisible join to beginning dc. Break off yarn. (48 dc, 8 ch2. 64 stitches in total)

Round 6: With copper, begin with standing sc in any ch2. (ch2, sc) in same space. *sc in next six stitches, then (sc, ch2, sc) in ch2 space**. Repeat from * to ** seven times, omitting final (sc, ch2, sc). Join with invisible join to beginning sc. Break off yarn. (64 sc, 8 ch2. 80 stitches in total)

Round 7: With cream, begin with standing dc in ch2 space above round four crossed stitch. 2dc in same space. *Skip next stitch, then dc in next six stitches. Skip next stitch, then fptc around the second dc of (dc, ch2, dc) from round five. Sc in ch2 space, then fptc around the first dc of (dc, ch2, dc) from round five. Skip next two stitches, then dc in next six stitches. 3dc in ch2 space**. Repeat from * to ** three times, omitting final 3dc. Join with invisible join to beginning dc. Break off yarn. (60 dc, 8 fptc, 4 sc. 72 stitches in total)



Make sure you begin in the right ch2 space.

Round 8: With storm blue, begin with standing dc in any sc. (dc, ch2, 2dc) in same stitch. *Skip next stitch, then dc in next seven stitches. Fpdc around next dc, ch2, and fpdc around the same dc. Skip next stitch, then dc in next seven stitches. In next sc (2dc, ch2, 2dc)**. Repeat from * to ** three times, omitting final (2dc, ch2, 2dc). Join with invisible join to beginning dc. Break off yarn. (72 dc, 8 fpdc, 8 ch2. 96 stitches in total)



Crochet Along*

Round 9: With black, begin with standing dc in ch2 space of any (2dc, ch2, 2dc). (dc, ch2, 2dc) in same space. *Skip next stitch, then dc in next three stitches. Hdc in next three stitches, then sc in next three stitches. 3sc in ch2 space, and skip next stitch. Sc in next three stitches, hdc in next three stitches, and dc in next three stitches. In ch2 space (2dc, ch2, 2dc)**. Repeat from * to ** three times, omitting final (2dc, ch2, 2dc). Join with invisible join to beginning dc. Break off yarn. (40 dc, 24 hdc, 36 sc, 4 ch2. 108 stitches in total)



Make sure you begin in the right ch2 space.

Round 10: With grey, begin with standing dc in any second dc before ch2 space. *ch4, and dc into third dc after ch2 space (skipping over dc, ch2 space, and next two dc). Dc in next four stitches, then hdc in next two stitches, and sc in next two stitches. Fpdc around fpdc from round eight, skip next stitch, sc in next stitch. Fpdc around fpdc from round eight, skip next two stitches. Then sc in next two stitches, hdc in next two stitches, and dc in next five stitches**. Repeat from * to ** three times, omitting final dc. Join with invisible join to beginning dc. Break off yarn. (40 dc, 16 hdc, 20 sc, 8 fpdc, 4 ch4. 100 stitches in total)



Round 11: With mocha, begin with standing dc in any ch4 corner space. (3dc, ch2, 4dc) in same space. *Dc in next three stitches, hdc in next three stitches, then sc in next nine stitches. Hdc in next three stitches, dc in next three stitches, then in ch4 space (4dc, ch2, 4dc)**. Repeat from * to ** three times, omitting final (4dc, ch2, 4dc). Join with invisible join to beginning dc. Break off yarn. (56 dc, 24 hdc, 36 sc, 4 ch2. 124 stitches in total)



This is what your corner should look like.

Round 12: With copper, begin with standing sc in any fifth dc before ch2 corner space. *tc in ch2 space from round nine, skip next stitch. Sc in next stitch, then tc in the same ch2 space from round nine, skip next stitch, and sc in next stitch. In corner ch2 from round 11, (sc, ch2, sc). Sc in next stitch, tc in ch2 space from round nine, skip next stitch. Sc in next stitch, tc in ch2 space from round nine, skip next stitch. Sc in next 21 stitches**. Repeat from * to ** three times, omitting final sc. Join with invisible join to beginning sc. Break off yarn. (108 sc, 16 tc, 4 ch2. 132 stitches in total)



Make sure you begin in the right stitch.

Round 13: With white, begin with standing dc in any ch2 corner space. (dc, ch2, 2dc) in same space. *Skip next stitch, then dc in next stitch. Fpdc around tc, dc in next two stitches, then fpdc around tc. Skip next stitch, then hdc in next eight stitches. Fptc around fpdc from round 10, skip next stitch, and hdc in next three stitches. Fptc around fpdc from round 10, skip next stitch, then hdc in next seven stitches. Fpdc around tc, dc in next two stitches, fpdc around tc, and skip next stitch. Dc in next stitch, then in corner ch2 space (2dc, ch2, 2dc)**. Repeat from * to ** three times, omitting final (2dc, ch2, 2dc). Join with invisible join to beginning dc. Break off yarn. (40 dc, 72 hdc, 16 fptc, 4 ch2. 144 stitches in total)



Crochet Along*

Round 14: With denim, begin with standing dc in any ch2 corner space. (dc, ch2, 2dc) in same space. *Dc in next three stitches, then fptc around the second fpdc from round 13. Skip next stitch, hdc in next two stitches, then fptc around the first fpdc from round 13. Skip next two stitches, then dc in next eight stitches. Skip next stitch, work a V stitch in next stitch, and skip next stitch. Dc in next eight stitches, then fptc around the second fpdc from round 13. Skip next stitch, hdc in next two stitches, then fptc around the first fpdc from round 13. Skip next stitch, then dc in next three stitches. In corner ch2 space, (2dc, ch2, 2dc)**. Repeat from * to ** three times, omitting final (2dc, ch2, 2dc). Join with invisible join to beginning dc. Break off yarn. (112 dc, 16 fptc, 16 hdc, 4 ch1, 4 ch2. 156 stitches in total)



Round 15: With dark brown, begin with standing dc in any ch2 corner space. (dc, ch2, 2dc) in same space. *dc in next 11 stitches. Skip next stitch, then work a V stitch in next stitch. (Skip next two stitches, then work a V stitch in next stitch) four times, then skip next stitch. Dc in next 11 stitches, then (2dc, ch2, 2dc) in corner ch2 space**. Repeat from * to ** three times, omitting final (2dc, ch2, 2dc). Join with invisible join to beginning dc. Break off yarn. (144 dc, 20 ch1, 4 ch2. 172 stitches in total)



Round 16: With cream, begin with standing hdc in any ch2 corner space. (ch2, hdc) in same space. *fpdc around next three stitches. Hdc in next 10 stitches, then fpdc around next dc. (2hdc in ch1 space, fpdc2tog around next two dc) four times, then 2hdc in ch1 space and fpdc around next dc. Note: you do not work into the top of any of the dc stitches of the round 15 V stitches. Hdc in next 10 stitches, then fpdc around next three stitches. In corner ch2 space (hdc, ch2, hdc)**. Repeat from * to ** three times, omitting final (hdc, ch2, hdc). Join with invisible join to beginning hdc. Break off yarn. (128 hdc, 32 fpdc, 16 fpdc2tog, 4 ch2. 184 stitches in total)



This is what your corner should look like.



This is what the fpdc2tog should look like.

Round 17: With grey, begin with standing dc in any ch2 corner space. (2dc, ch2, 3dc) in same space. *Skip next stitch, hdc in next three fpdc, and dc in next three stitches. Skip next stitch, then work a V stitch in next stitch. (Skip next two stitches, then work a V stitch in next stitch) nine times, then skip next stitch. Dc in next three stitches, then hdc in next three fpdc. Skip next stitch, then (3dc, ch2, 3dc) in corner ch2 space**. Repeat from * to ** three times, omitting final (3dc, ch2, 3dc). Join with invisible join to beginning dc. Break off yarn. (128 dc, 24 hdc, 40 ch1, 4 ch2. 200 stitches in total)



Crochet Along*

Round 18: With mocha, begin with standing hdc in any ch2 corner space. (ch2, hdc) in same space. *hdc in next three stitches, then fptc around the third fpdc from round 16. Skip next stitch, hdc in next stitch, then fptc around the first fpdc from round 16. Skip next stitch, hdc in next three stitches, then fpdc around next dc. (2hdc in ch1 space, fpdc2tog around next two dc) nine times, then 2hdc in ch1 space and fpdc around next dc. Hdc in next three stitches, then fptc around the third fpdc from round 16. Skip next stitch, hdc in next stitch, then fptc around the first fpdc from round 16. Skip next stitch, hdc in next three stitches, then in corner ch2 space (hdc, ch2, hdc)**. Repeat from * to ** three times, omitting final (hdc, ch2, hdc). Join with invisible join to beginning hdc. Break off yarn. (144 hdc, 16 fptc, 8 fpdc, 36 fpdc3tog, 4 ch2. 212 stitches in total)



This is what your 'crossed stitches' should look like.



This is what the fpdc2tog should look like.

Round 19: With black, begin with standing sc in any ch2 corner space. (ch2, sc) in same space. *Skip first stitch, then sc in next 50 stitches. In corner ch2 space (sc, ch2, sc)**. Repeat from * to ** three times, omitting final (sc, ch2, sc). Join with invisible join to beginning sc. Break off yarn. (208 sc, 4 ch2. 216 stitches in total)

Round 20: With storm blue, begin with standing hdc in any ch2 corner space. (ch3, hdc) in same space. *Skip first stitch, then hdc in next four stitches. Fpdc around fptc from round 18, skip next stitch, then hdc in next stitch. Fpdc around fptc from round 18, skip next stitch, then hdc in next six stitches. (fpdc around fptc2tog, skip next stitch, then hdc in next two stitches) eight times, then fpdc around fpdc2tog and skip next stitch. Hdc in next six stitches, then fpdc around fptc from round 18. Skip next stitch, hdc in next stitch, then fpdc around fptc from round 18. Skip next stitch, and hdc in next four stitches. In corner ch2 space (hdc, ch3, hdc)**. Repeat from * to ** three times, omitting final (hdc, ch3, hdc). Join with invisible join to beginning hdc. Break off yarn. (160 hdc, 52 fpdc, 4 ch3. 224 stitches in total)



This is what your fpdc stitches should look like.

Round 21: With silver, begin with standing dc in any ch3 corner space. (dc, ch2, 2dc) in same space. *Skip next stitch, then dc in next 52 stitches. In corner ch3 space (2dc, ch2, 2dc)**. Repeat from * to ** three times, omitting final (2dc, ch2, 2dc). Join with invisible join to beginning dc. Break off yarn. (224 dc, 4 ch2. 232 stitches in total)

Round 22: With copper, begin with standing dc in any ch2 corner space. (dc, ch2, 2dc) in same space. *bpdc in next 16 stitches. (fptc around fpdc from round 20, skip next stitch, then bpdc in next two stitches) eight times, then fptc around fpdc from round 20 and skip next stitch. Bpdc in next 15 stitches, then in corner ch2 space (2dc, ch2, 2dc). Repeat from * to ** three times, omitting final (2dc, ch2, 2dc). Join with invisible join to beginning dc. Break off yarn. (188 bpdc, 36 fptc, 16 dc, 4 ch2. 248 stitches in total)



This is what your fptc should look like.

Round 23: With dark brown, begin with standing sc in any ch2 corner space. (ch2, 2sc) in same space. *sc in next 60 stitches, then (sc, ch2, 2sc) in corner ch2 space**. Repeat from * to ** three times, omitting final (sc, ch2, 2sc). Note: make sure you don't sc too tightly in this round and the next, otherwise your final rounds will be too tight and the square won't sit flat. Join with sl st to beginning sc. (252 sc, 4 ch2. 260 stitches in total)

Round 24: Sl st into corner ch2 space. Ch1, then 3sc in same space. *sc in next 63 stitches, then 3sc in corner ch2 space**. Repeat from * to ** three times, omitting final 3sc. Join with invisible join to first sc. Break off yarn. (264 sc. 65 stitches each side, plus 'corner' stitch)

Sew in all ends.