



US Terms

# Crochet Along

Stylecraft



## Outer Square

Ross Blanket - Part 4

# Crochet Along\*

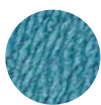
## Part 4 – Outer Square (make 8)



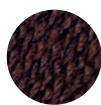
### Special DK colours used:



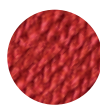
1001  
White



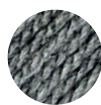
1722  
Storm Blue



1004  
Dark Brown



1029  
Copper



1099  
Grey



1064  
Mocha



1002  
Black



1302  
Denim



1005  
Cream

### MEASUREMENT

20cm 8in square

### ABBREVIATIONS

<b>sl st</b>	slip stitch	<b>fpdc</b>	front post double crochet
<b>ch</b>	chain	<b>fptc</b>	front post treble crochet
<b>sc</b>	single crochet	<b>fpdc2tog</b>	work front post double crochet decrease across two stitches
<b>hdc</b>	half-double crochet	<b>fpdc2tog</b>	work front post treble crochet decrease across two stitches
<b>dc</b>	double crochet		
<b>tc</b>	treble crochet		
<b>bphdc</b>	back post half-double crochet		
<b>bpdc</b>	back post double crochet		

### EQUIPMENT

4.5mm crochet hook  
Tapestry needle  
Stitch markers

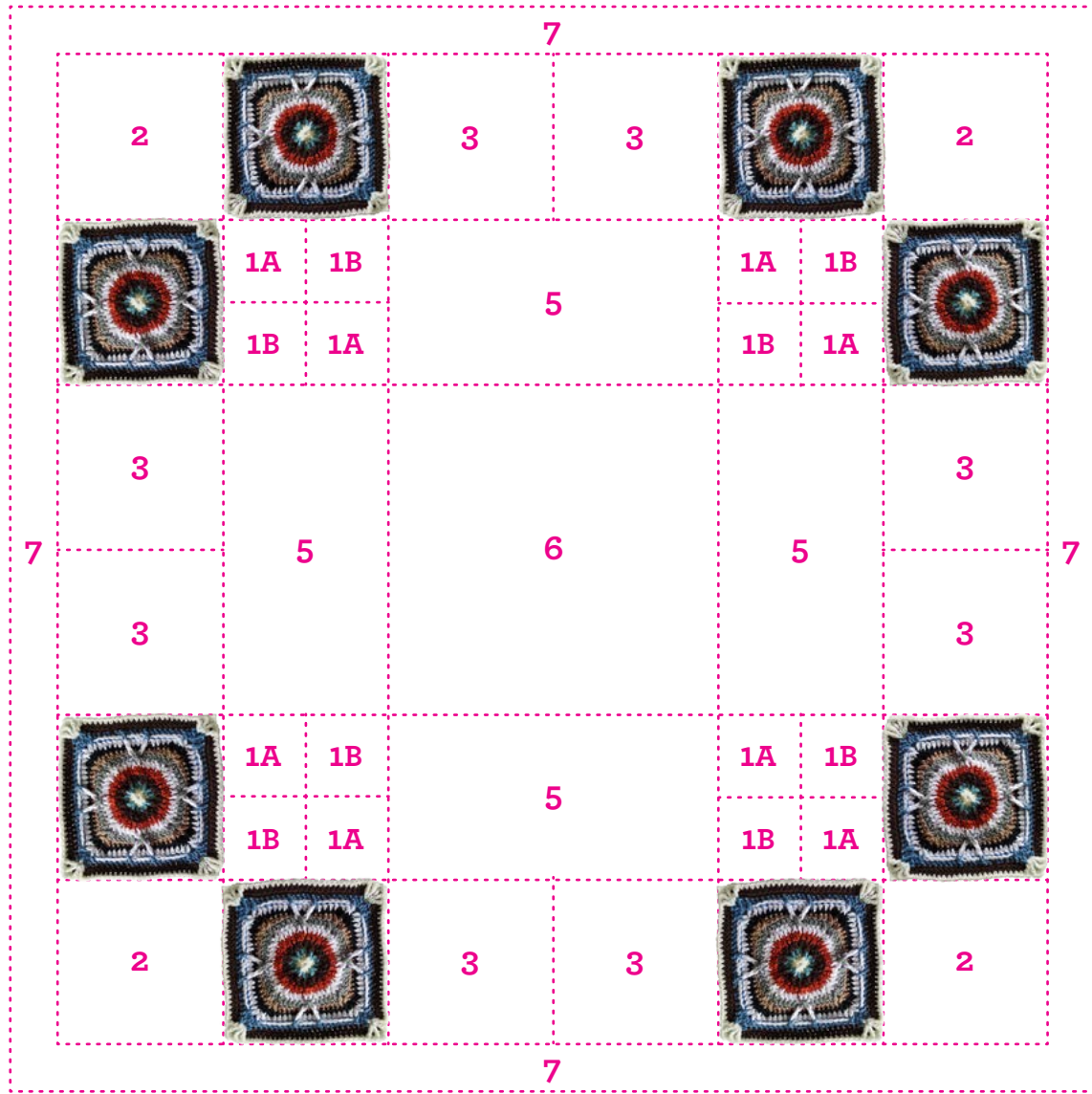
### NOTES:

#### Fastening off and dealing with yarn ends

In terms of fastening off, Catherine always uses the invisible join technique as she explains in her introduction. Catherine then sews the ends with a needle.

# Crochet Along\*

## Part 4 – Outer Square (make 8)



Although every effort has been made to ensure that instructions are correct, Stylecraft cannot accept any liabilities. In the unlikely event that there are errors in the patterns we will work as quickly as possible to issue an addenda.

Stylecraft cannot accept responsibility for the result of using any other yarn.



# Crochet Along\*

## METHOD

**Round 1:** With cream, in a magic circle ch3 (counts as one dc), then 11 dc. Join with invisible join to beginning ch3. Pull the beginning yarn end tight to close the circle. Break off yarn. (12 dc)

**Round 2:** With storm blue, begin with a standing dc in any stitch. \*(fpdc, ch2, fpdc) around next stitch, then dc in next two stitches\*\*. Repeat from \* to \*\* three times, omitting final dc. Join with invisible join to beginning dc. Break off yarn. (8 fpdc, 8 dc, 4 ch2. 24 stitches in total)



**Round 3:** With dark brown, begin with standing dc in the first stitch of round two (where you've joined the end to the beginning of the round). \*fpdc around next stitch, then (dc, ch2, dc) in ch2 space. Fpdc around next stitch, then dc in next stitch. Ch1, then dc in next stitch\*\*. Repeat from \* to \*\* three times, omitting final dc. Join with invisible join to beginning dc. Break off yarn. (16 dc, 8 fpdc, 4 ch1, 4 ch2. 36 stitches in total)



**Round 4:** With copper, begin with standing dc in any ch2 corner space. (ch2, dc) in same space. \*fpdc around next stitch, dc in next two stitches, then (dc, ch1, dc) in ch1 space. Dc in next two stitches, fpdc around next stitch, then (dc, ch2, dc) in corner ch2 space\*\*. Repeat from \* to \*\* three times, omitting final (dc, ch2, dc). Join with invisible join to beginning dc. Break off yarn. (24 dc, 8 fpdc, 4 ch1, 4 ch2. 44 stitches in total)



**Round 5:** With white, begin with standing dc in any ch2 corner space. (ch2, dc) in same space. \*fpdc around next stitch, then dc in next three stitches. Fpdc around next stitch, hdc in ch1 space, then fpdc around next stitch. Dc in next three stitches, then fpdc around next stitch, and (dc, ch2, dc) in corner ch2 space\*\*. Repeat from \* to \*\* three times, omitting final (dc, ch2, dc). Join with invisible join to beginning dc. Break off yarn. (32 dc, 16 fpdc, 4 hdc, 4 ch2. 60 stitches in total)



**This is what your two fpdc should look like, with a hdc in between.**

**Round 6:** With grey, begin with standing dc in any ch2 corner space. (ch2, dc) in same space. \*fpdc around next stitch, then dc in next four stitches. Fpdc around the *second* fpdc from round five, skip next stitch, and sc in next. Fpdc around the *first* fpdc from round five, and skip next stitch. Dc in next four stitches, fpdc in next, then (dc, ch2, dc) in corner ch2 space\*\*. Repeat from \* to \*\* three times, omitting final (dc, ch2, dc). Join with invisible join to beginning dc. Break off yarn. (40 dc, 8 fpdc, 8 fpte, 4 sc, 4 ch2. 68 stitches in total)



**This is what your crossed stitches should look like.**

**Round 7:** With mocha, begin with standing dc in any ch2 corner space. (ch2, dc) in same space. \*fpdc around next stitch, then hdc in next three stitches. Sc in next seven stitches, then hdc in next three stitches. Fpdc around next stitch, then (dc, ch2, dc) in corner ch2 space\*\*. Repeat from \* to \*\* three times, omitting final (dc, ch2, dc). Join with invisible join to beginning dc. Break off yarn. (28 sc, 24 hdc, 8 dc, 8 fpdc, 4 ch2. 76 stitches in total)

**Round 8:** With black, begin with standing dc in any ch2 corner space. (ch2, dc) in same space. \*fpdc around next stitch, then hdc in next three stitches. Sc in next nine stitches, then hdc in next three stitches. Fpdc around next stitch, then (dc, ch2, dc) in corner ch2 space\*\*. Repeat from \* to \*\* three times, omitting final (dc, ch2, dc). Join with invisible join to beginning dc. Break off yarn. (36 sc, 24 hdc, 8 dc, 8 fpdc, 4 ch2. 84 stitches in total)

# Crochet Along\*

**Round 9:** With white, begin with standing dc in any ch2 corner space. (ch3, dc) in same space. \*fpdc around next stitch, dc in next stitch, then skip next stitch. Dc in next four stitches, then fptc around fptc from round six. Skip next stitch, dc in next four stitches, then fptc around fptc from round six. Skip next stitch, and dc in next five stitches. Fpdc around next stitch, then (dc, ch3, dc) in corner ch2 space\*\*. Repeat from \* to \*\* three times, omitting final (dc, ch3, dc). Join with invisible join to beginning dc. Break off yarn. (64 dc, 8 fptc, 8 fpdc, 4 ch3. *92 stitches in total*)



**Make sure to skip the stitch!**



**This is what your fptc should look like.**

**Round 10:** With denim, begin with standing dc in any ch3 corner space. (dc, ch3, 2dc) in same space. \*fpdc around next stitch, then bpdc in next six stitches. Fpdc around next stitch, bpdc in next four stitches, then fpdc around next stitch. Bpdc around next six stitches, fpdc around next stitch, then (2dc, ch3, 2dc) in corner ch2 space\*\*. Repeat from \* to \*\* three times, omitting final (2dc, ch3, 2dc). Join with invisible join to beginning dc. Break off yarn. (64 bpdc, 16 fpdc, 16 dc, 4 ch3. *108 stitches in total*)



**This is what your corner should look like.**



**Round 11:** With dark brown, begin with standing sc in any second dc before ch3 corner space. \*ch5, then sc into the second dc after corner ch3 (skipping over dc, ch3 space, and next dc). Then sc in next 21 stitches\*\*. Repeat from \* to \*\* three times, omitting final sc. Join with sl st to beginning sc. (88 sc, 4 ch5. *108 stitches in total*)



**This is what your corner should look like.**

**Round 12:** Sl st into ch5 corner space. Ch3 (counts as one dc), then (3dc, ch2, 4dc) in same space. \*hdc in next 22 stitches, then (4dc, ch2, 4dc) in corner ch5 space\*\*. Repeat from \* to \*\* three times, omitting final (4dc, ch2, 4dc). Join with invisible join to beginning ch3. Break off yarn. (88 hdc, 32 dc, 4 ch2. *128 stitches in total*)

**Round 13:** With cream, begin with standing sc in any ch2 corner space. (ch2, sc) in same space. \*tc in unworked ch3 space from round 10, skip next stitch, sc in next stitch, then tc in same ch3 space. Skip next stitch, then sc in next 24 stitches. Tc in ch3 space from round 10, skip next stitch, sc in next stitch, then tc in same ch3 space. Then (sc, ch2, sc) in corner ch2 space\*\*. Repeat from \* to \*\* three times, omitting final (sc, ch2, sc). Join with invisible join to beginning sc. Break off yarn. (112 sc, 16 tc, 4 ch2. *136 stitches in total*)



**This is what your corner should look like.**

Sew in all ends.